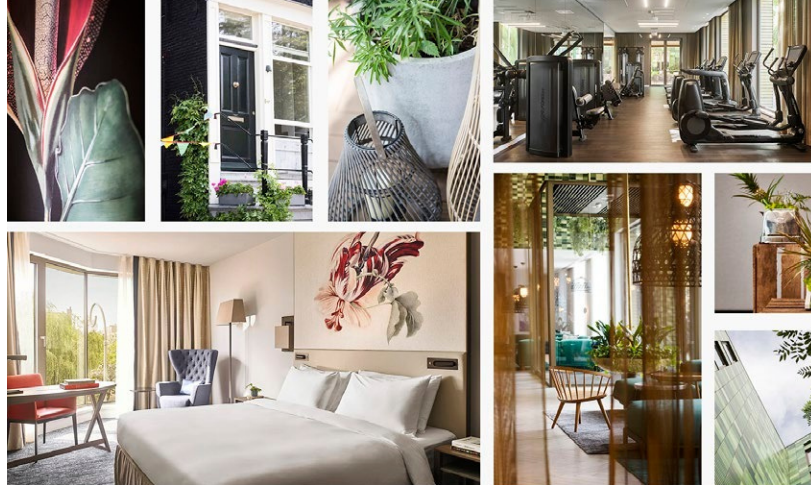


HYATT REGENCY AMSTERDAM
Sarphatistraat 102 - 104
1018 GV Amsterdam,
Netherlands

T +31 (0) 20 554 1234
amsterdam.regency@hyatt.com
amsterdam.regency.hyatt.com
@hyattregencyams



ACCOMMODATIONS

- 211 well-appointed spacious guestrooms & suites (from 27 m2), including 13 Regency Suites, one Ambassador Suite and one Presidential Spinoza Suite
- Botanical inspired homely décor
- Regency Club Lounge on the 2nd floor, all-day snacks and evening cocktails & canapés

ALL ACCOMMODATIONS OFFER

- Complimentary Wi-Fi
- Spacious bathroom with amenities, robes and hairdryer
- Dedicated working area
- Flat-screen satellite TV with Miracast & Apple TV
- Bottled mineral water & Coffee & Tea facilities
- Minibar
- Dual-line telephone and voicemail
- In-room safety deposit box
- Individual climate control
- Hyatt Has It
- Yoga mat & dumbbells on request

RECREATIONAL FACILITIES

- Stay on track with your fitness thanks to the fully-equipped 24 hour Fitness Centre
- Rest & revitalize in the Wellness Area with steam room, sauna and experience shower
- Challenge peers to a game of pool or boardgame at the bar
- Enjoy your morning coffee or afternoon flex-working at the 'living' Communal Table
- A variety of jogging & cycling trails through the city and nearby Oosterpark are available
- Take in the fresh air from the courtyard terrace

AMENITIES

- 24-hour room service
- 24-hour concierge service
- Multilingual staff
- 24-hour Fitness Centre & Wellness Area
- Laundry/dry cleaning
- Underground car park and valet service
- Business Centre services
- Babysitting service on request
- Limousine service and airport transfer upon request
- Communal Flex work space

RESTAURANTS & BARS

- Mama Makan Restaurant — Warm & inviting neighbourhood restaurant serving authentic Indonesian food, including Mama's signature Rijsttafel. A seat at the Chef's Table offers diners a front row seat to the vibrant open kitchen
- Bar — Vibrant lobby bar with courtyard terrace & pool table, serving botanical-inspired cocktails and tasty bites. The communal table offers the perfect spot for a coffee, or afternoon flex working

MEETINGS & EVENTS

- 517 m2 of flexible & modern event space taking guests through the five senses of botany & sustainability from arrival to departure
- 200 m2 ballroom with vibrant pre-function Foyer area
- The Foyer, a breathtaking space with grand entrance, an impressive stage for your next social event
- Three beautifully appointed meeting rooms (A, B, C) for events accommodating up to 70 guests
- All meeting rooms bathed in natural daylight and equipped with high-tech AV & lighting solutions
- Awarded the BREEAM Excellent certificate for sustainability

LOCATION

Hyatt Regency Amsterdam is situated in Amsterdam's cultural garden, the Plantage, bordering the city's hip & exciting east neighbourhood. This area, in the centre of Amsterdam is home to the city's botanical gardens and numerous museums and cultural institutions. The hotel is just 5 minutes' from the nearest metro station and close to Amsterdam's main business districts and the RAI convention centre.

POINTS OF INTEREST

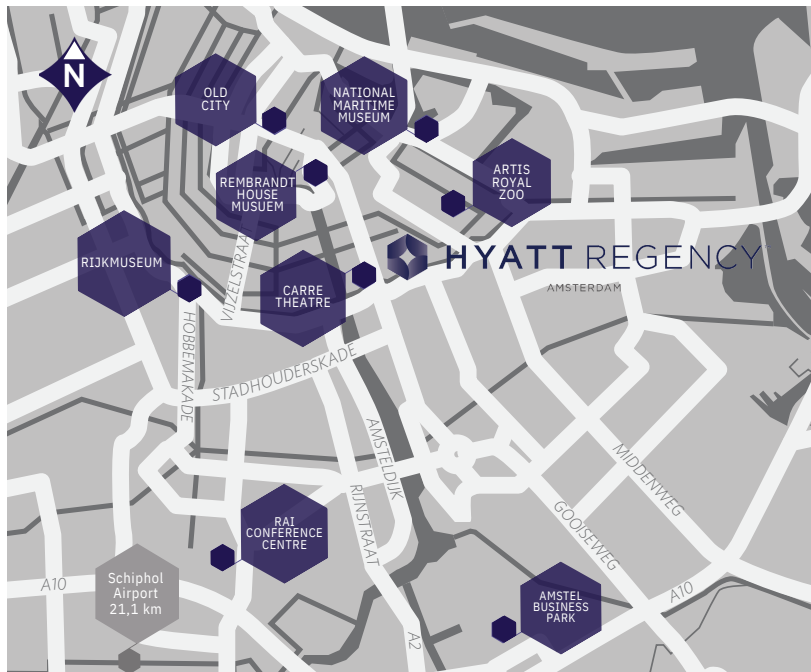
- **Nature:** Hortus Botanicus, Artis Royal Zoo, Oosterpark
- **Culture:** Theatre Carré, National Opera & Ballet, Tropenmuseum, Rembrandt House, Rijksmuseum, Hermitage & National Maritime Museum
- **Business:** Amstel Business Park, South Axis & RAI Convention Centre

TRANSPORTATION

- City Centre - 1,9 km / 5 min car / 10 min walk
- Central train station - 3,6 km / 8 min public transport
- Schiphol Airport - 21,1 km / 20 min car
- RAI Convention Centre - 4,4 km / 9 min car

VISITOR INFORMATION

- Language: Dutch
- Currency: Euro (EUR)
- Climate: Amsterdam has a mild climate and can be best visited in spring or summer. Temperatures vary from 1°C in January to 21°C in summer (average). Rain can be expected throughout the entire year



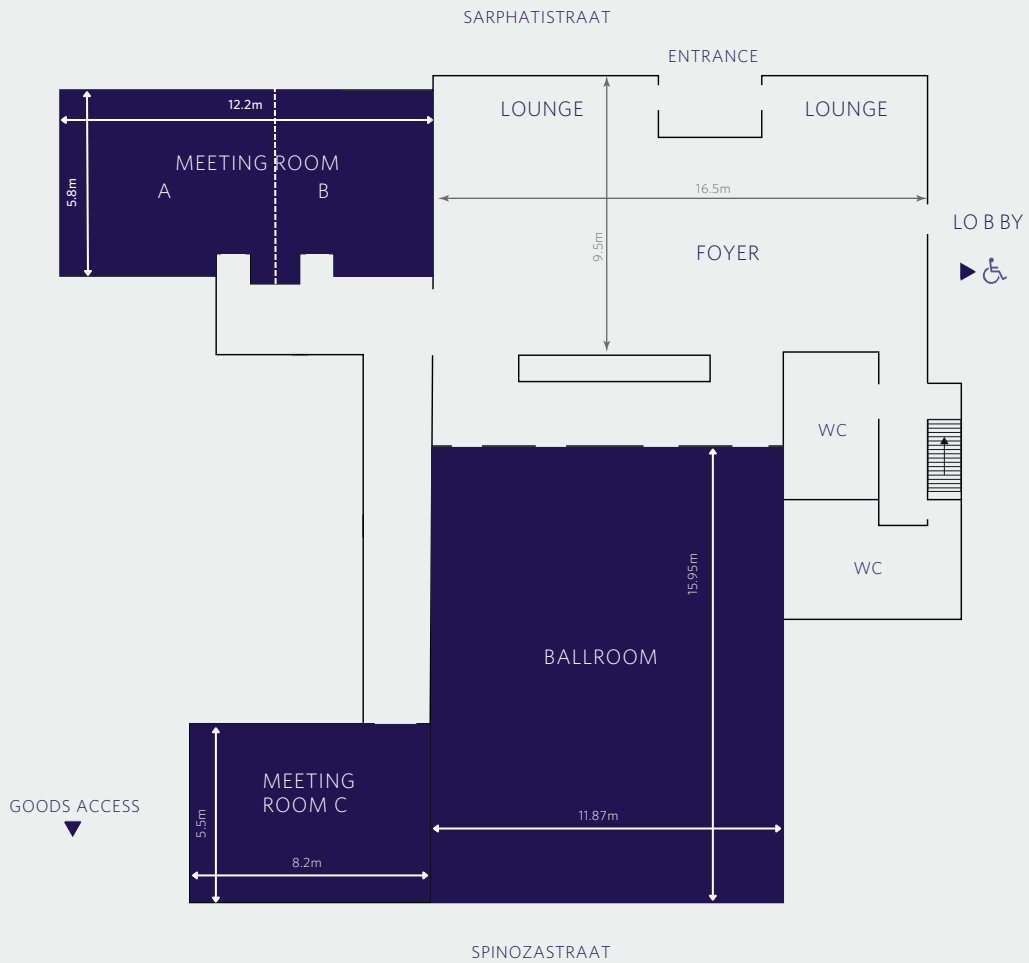
HYATT REGENCY AMSTERDAM
Sarphatistraat 102 - 104
1018 GV Amsterdam,
Netherlands

T +31 (0) 20 554 1234
amsterdam.regency@hyatt.com
amsterdam.regency.hyatt.com
@hyattregencyams



FLOOR PLAN

Ground Floor



HYATT REGENCY AMSTERDAM
 Sarphatistraat 102 - 104
 1018 GV Amsterdam,
 Netherlands

T +31 (0) 20 554 1234
 amsterdam.regency@hyatt.com
 amsterdam.regency.hyatt.com
 @hyattregencyams



CAPACITY CHART



| Room Name | Room Dimensions L x W x H | Room Size Sq. Ft. / Sq. M. | Banquet | Reception | Theatre | Classroom | Boardroom | U-Shape | Cabaret |
|-----------------|------------------------------|-------------------------------|---------|-----------|---------|-----------|-----------|---------|---------|
| BALLROOM | 15.95m x 11.87m x 3.4m | 2055 / 191 | 128 | 205 | 200 | 80 | 32 | 40 | 120 |
| MEETING ROOM AB | 12.2m x 5.8m x 3.35m | 861 / 80 | 48 | 75 | 65 | 24 | 24 | 28 | 50 |
| Meeting Room A | 7m x 5.8m x 3.35m | 495 / 46 | 32 | 50 | 40 | 12 | 12 | 16 | 30 |
| Meeting Room B | 5.2m x 5.8m x 3.35m | 366 / 34 | - | 40 | 24 | 8 | 8 | 12 | 20 |
| MEETING ROOM C | 8.2m x 5.5m x 3.25m | 549 / 51 | 12 | 40 | - | - | 12 | - | - |
| FOYER | 16.5m x 9.5m x 5m | 2099 / 195 | 56 | 150 | - | - | - | - | - |
| TERRACE | 9.9m x 9.9m x 5m | 1055 / 98 | - | 70 | - | - | - | - | - |